



# MONTHLY MEMBERSHIP PROGRESS REPORT

District 5 SKN

Results as of: 11/30/2017

GMT: GORDON ZIEGLER

LOCATION SASKATCHEWAN

GMT CA

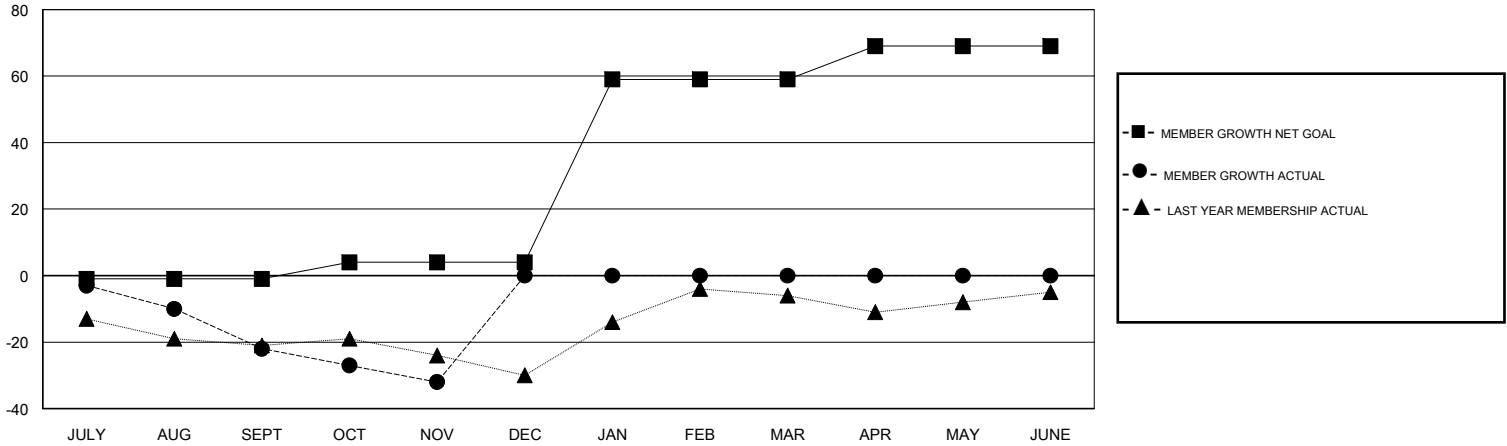
| Clubs                 |               |           |               |
|-----------------------|---------------|-----------|---------------|
| RESULTS FOR 2017-2018 |               |           |               |
| QUARTER               | NEW CLUB GOAL | NEW CLUBS | DROPPED CLUBS |
| JULY/AUG/SEPT         | 0             | 0         | 0             |
| OCT/NOV/DEC           | 0             | 0         | 0             |
| JAN/FEB/MAR           | 1             | 0         | 0             |
| APR/MAY/JUNE          | 0             | 0         | 0             |

| Members               |                        |                      |  |
|-----------------------|------------------------|----------------------|--|
| RESULTS FOR 2017-2018 |                        |                      |  |
| QUARTER               | MEMBER GROWTH NET GOAL | MEMBER GROWTH ACTUAL | DROPPED MEMBERS ACTUAL (including transfers) |
| JULY/AUG/SEPT         | -1                     | 23                   | 45   |
| OCT/NOV/DEC           | 5                      | 18                   | 24   |
| JAN/FEB/MAR           | 55                     | 0                    | 0  |
| APR/MAY/JUNE          | 10                     | 0                    | 0  |

GOALS AND ACTUAL NEW CLUBS CUMULATIVE



GOALS AND ACTUAL MEMBERS CUMULATIVE



|                  |  |   |              |
|------------------|--|---|--------------|
| DROPPED CLUBS: 0 | 16 CLUBS OF 61 ADDED 1 OR MORE NEW MEMBERS | <u>GENDER DISTRIBUTION</u>                                |              |
| DROPPED MEMBERS  |  | MALE  | 922 (73.94%) |
| DECEASED         | 13   | FEMALE  | 325 (26.06%) |
| CLUB CANCELLED   | 0  | Women Percentage Fiscal Year Goal: 26%                    |              |
| OTHER            | 56   | <a href="#">CLICK HERE FOR CUMULATIVE MEMBERSHIP DATA</a> |              |
| TOTAL            | 69   | TOTAL FAMILY UNIT MEMBERS                                 | 226          |
|                  |  | FAMILY MEMBERS PAYING HALF DUES                           | 114          |